

# practice profile | Brink Architects

February 2021

the studio, friday's barn  
crowfield, brackley  
northants  
nn13 5tw

[www.brinkarchitects.co.uk](http://www.brinkarchitects.co.uk)



# 00 | contents

## 01 | who we are

Our Studio  
Our Approach  
Our Team  
Our Skills

## 02 | what we do

Our Services  
Project Stages: RIBA Plan of Work

## 03 | recent & ongoing projects

### 04 | chris rogers: director

Experience

### 05 | contact

## Images |

01 | Holly House | [visualisation of contemporary extension to a listed building, which recently achieved planning permission](#)

02 | Newbottle Manor | [Manor house in Northamptonshire, which is currently undergoing major renovations](#)

03 | Hockley Lane, Ettington | [proposed elevation of a development of 3 large family homes, which recently achieved planning permission](#)





# 01 | who we are

## Our Studio

Brink Architects is a new and dynamic architectural studio based in a picturesque rural location. Founded in January 2018 by award winning architect Chris Rogers, we have rapidly gained a reputation as a creative and professional practice with projects across the country.

The studio currently has a wide variety of work including high end residential, commercial, healthcare & retail projects.

The Brink studio is located just outside the town of Brackley on the border of three counties; Northamptonshire, Buckinghamshire and Oxfordshire.

## Images |

01 | Combrook Manor | [Extension to listed manor house](#)

02 | Haydon's Farm | [Visualisation of a converted listed barn building, and new build residential units](#)

03 | Castle Street, Marsh Gibbon | [Visualisation of proposed traditional - style residential units](#)

04 | Holly House | [Visualisation showing internal view of contemporary extension to a listed building](#)

05 | Mill Lane | [7 new dwellings in Brackley](#)

06 | Buckingham Butchers | [A recently completed scheme to convert a listed building to create a butchers and student accommodation](#)

01



02



03



04



05



Our team have experience working on a diverse range of projects throughout the UK – from high end private residences to master plans

06



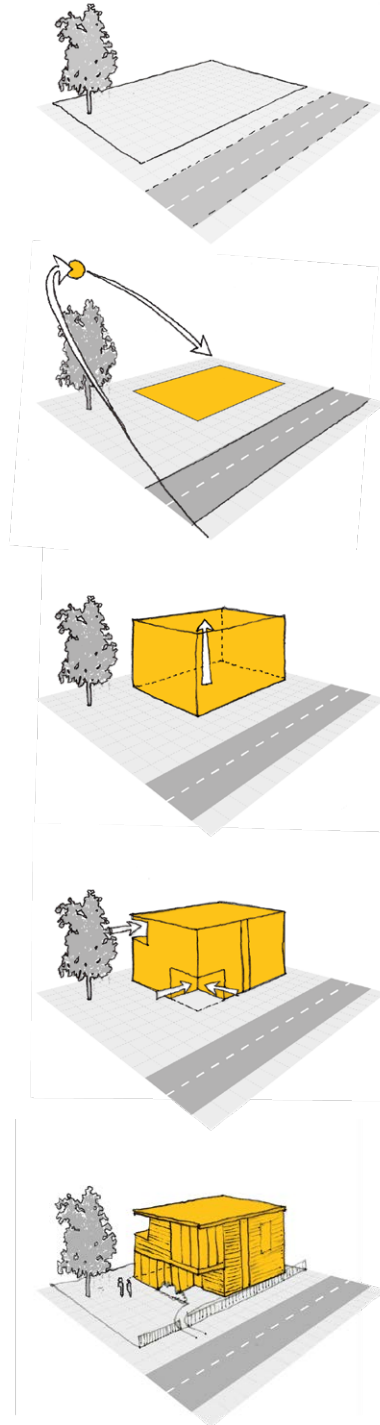


# 01 | who we are

## Our Approach

Our rapid success can be put down to several elements which, when combined, ensure that once a customer has worked with us, they remain with us. Providing an exceptional customer experience is at the heart of everything we do and this is predominantly driven by the following factors:

- Our attention to detail – It's extremely rare that any detail, however small, is overlooked.
- Anticipating our client's needs – We know what they want before they've even thought of it.
- Our belief in the importance of a collaborative design process and the cross pollination of professional services, to achieve the innovative solutions others thought not possible.
- Creativity – The more impossible a request looks, the more we want to find a solution. Creativity permeates through all aspects of what we do.
- Professionalism – always.



## Our Team

Our team at Brink Architects includes architectural technologists in addition to experienced design staff, giving us a wide range of knowledge and abilities. Together we have the experience, creativity and agility to deliver complex and challenging projects on time and on budget.

We work regularly with many consultants, bringing together all areas of expertise required to deliver the project. These include:

- Quantity surveyors
- Structural engineers
- Services engineers
- Lighting designers
- Landscape architects
- Ecologists
- Approved inspectors
- Planning consultants
- Party wall surveyors
- CDM coordinators
- Arboriculturalists

## Our Skills

Brink Architects understand the importance of clearly communicating ideas to a client, and how to work to programs and budgets.

Some of our key skills include the following:

- Project co-ordination and management
- Acting as lead consultant
- Contract administration
- Principal Designer role
- Construction Design Management (CDM)
- Feasibility Studies
- Conceptual sketching
- 3D modelling and Rendering
- Design development
- Architectural detailing
- Building Regulations compliance packages
- National Builders Specifications (NBS)
- Employers Requirements Documents (ERD)
- Listed building and conservation projects

We work with a range of software to produce clear technical and visual details and drawings, allowing all stakeholders to realise the project vision.

### Our Services

A sound technical background enables our team to resolve complex and challenging problems through the application of innovative and effective solutions. Our attention to detail and technical ability ensure the delivery of these solutions in a timely and coherent manner.

As an RIBA Chartered Practice we adopt a clearly defined and methodical staged approach to development, as defined by the RIBA Plan of Work, from the initial brief through to completion.

We offer a tailored service to suit individual client requirements. This allows our clients complete control in the architectural input needed to realise their vision.

## RIBA Plan of Work



### Stage 0 | Strategic Definition

We will undertake some preliminary appraisals to assess the options and feasibility of the project. This can range from a sketch design solution to a full feasibility study and will enable you to decide on the best way forward.



### Stage 1 | Preparation and Brief

We will clarify the level of sustainable ambitions you may have, and obtain quotes for the provision of the surveys required. We will provide an indication of time scales for the relevant stages and milestones.



### Stage 2 | Concept Design

Using the initial project brief we will develop outline proposals, and present a number of initial concepts for you to choose from, integrating the feedback from consultants. We will also liaise with local planners.

The final design brief should reflect your aspirations and provide you with a home that adds value and improves quality of life.



### Stage 3 | Developed Design

Once the concept drawings are agreed, we will spend time transforming ideas into something that can be built. This includes coordinating the work of other consultants into the designs.

Once agreed, the design proposals will then be submitted for planning approval, if required.



### Stage 4 | Technical Design

Brink Architects will now prepare the technical drawings and a specification and/or a schedule of works that will be used to price the tender and construct the building.

We can then invite and appraise tenders from builders and administer the building contract on your behalf.



### Stage 5 | Construction

Throughout the construction phase the we will administer your contract with the builder, carry out regular inspections, deal with queries, instruct any additional work required, monitor progress on site, keep track of cost, value the works and certify payments due to the builder.



### Stage 6 | Handover & Close Out

When the project is ready to handover we will make a final inspection and certify completion.

We will be available after handover and during any defects period to arrange for certifying the final payment.



### Stage 7 | In Use

Brink Architects continuously monitors performance to ensure that our service is maintained at the high professional standards we known and respected for.



## 03 | recent & ongoing projects

### Haydon's Farm, Swindon

#### Project Summary |

This project looked to improve on an existing planning permission with 12 new build modular units and the conversion of existing barn into offices. The design optimises the space available on a constricted site, and the design reflects the site's previous use as a farm.

#### Architectural Services |

Brink provided full architectural services for RIBA stages 0-7

#### Design Challenges / Opportunities |

The client wished to use a modular housing system for the new build units, and key challenges of the project were master-planning the site and creating elevations that were successful contextually.

### Buckingham Butchers

#### Project Summary |

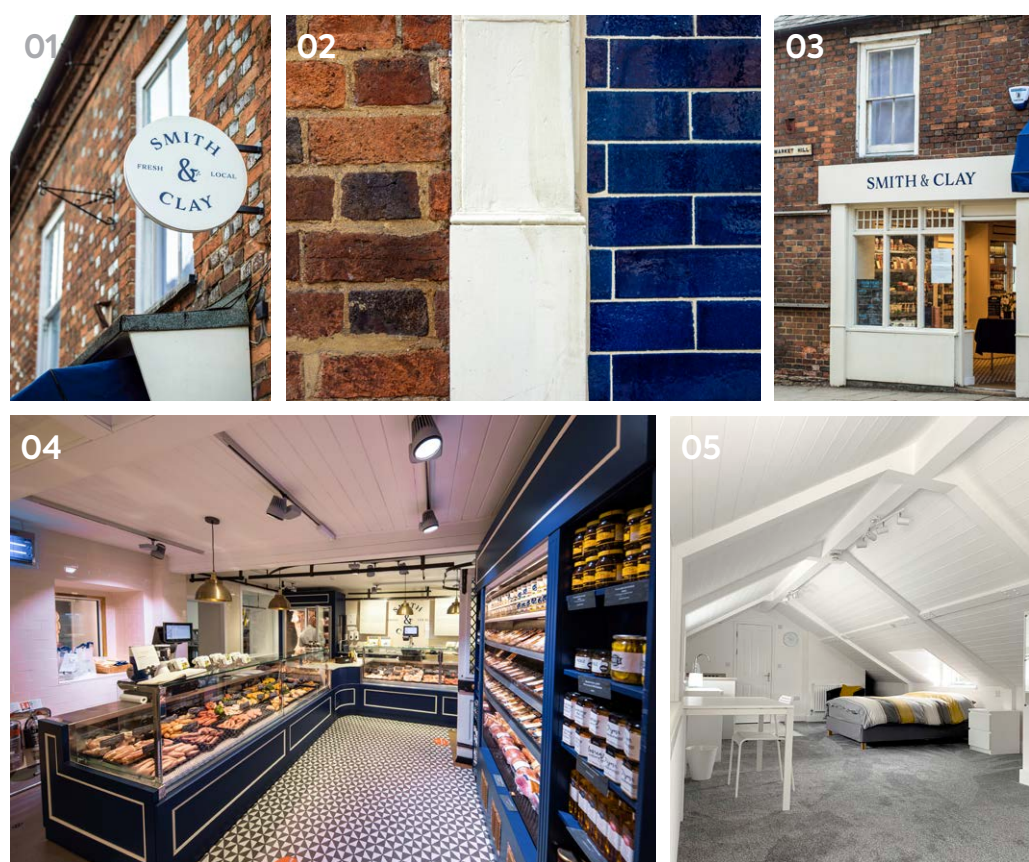
The recently completed renovation of an existing listed butcher's shop, including the introduction of new student accommodation.

#### Architectural Services |

Brink provided full architectural services for RIBA stages 0-7

#### Design Challenges / Opportunities |

Working with the existing listed building came both with challenges and opportunities. By introducing contemporary elements in contrasting materials we were able to reinforce the client's brand identity and produce a clean contemporary piece of architecture that complimented the adjoining historic structure, whilst maintaining contextual relevance.



## Images |

- 01 - 05 | Buckingham Butchers | Recently completed student accommodation & butcher's shop  
 06 | Newbottle Manor | Manor house in Northamptonshire, which is currently undergoing major renovations  
 07 - 08 | Mill Lane | Recently completed residential development



06



07



08



## 03 | recent & ongoing projects

### | Forceleap Farm

#### Project Summary |

This project, which achieved planning in late 2020 looks to convert a series of existing agricultural buildings, creating a rural events centre that could cater for conferences and weddings, including overnight accommodation.

#### Architectural Services |

Brink are providing full architectural services for RIBA stages 0 – 7

#### Design Challenges / Opportunities |

Working with existing buildings inevitably results in a number of challenges. As such a sensitive approach to the retention and enhancement of historic features was required to bring about sympathetic design solutions.

### | Field View, Brackley

#### Project Summary |

A project for 62 affordable/private dwelling houses. The mix of units is representative of the organic development of the towns residential growth and provides a range of house types to suit local housing need.

#### Architectural Services |

Brink are providing full architectural services for RIBA stages 0 – 7

#### Design Challenges / Opportunities |

The site has significant underground sewer/gas/electric and BT services cutting through. To further complicate the design a public footpath bisected the site. This was overcome by using easement lines to dictate the road and footpath routes, allowing us to maximise development space available.

### | Newbottle Manor

#### Project Summary |

Remodelling existing listed manor to provide both services and layout to suit a modern family lifestyle. The project is currently on site.

#### Architectural Services |

Brink are providing architectural services for RIBA stages 3–7

#### Design Challenges / Opportunities |

Maintaining the integrity of the listed building whilst incorporating modern interventions to suit a young family dynamic.

### | Castle Street, Marsh Gibbon

#### Project Summary |

A scheme for 9 new build homes of a traditional design, which sit on a greenfield site next to a conservation area.

#### Architectural Services |

Brink are providing full architectural services for RIBA stages 0 – 7

#### Design Challenges / Opportunities |

Creating a layout of units that worked within the constraints of the site, and designing elevations that draw from the context of the village whilst not being pastiche in appearance.

### | Chalthorpe Road, Edgebaston

#### Project Summary |

One of the UK's leading plastic surgeons required conversion of a listed building into a flagship clinic.

#### Architectural Services |

Brink provided architectural services for RIBA stages 0–4

#### Design Challenges / Opportunities |

The challenge for Brink Architects was to reflect the clients brand identity and clinical professionalism whilst working within the constraints of historically significant building.

### | Mill Lane, Brackley

#### Project Summary |

Brink architects were asked to improve upon a consented scheme for 7 dwellings.

#### Architectural Services |

Brink provided full architectural services for RIBA stages 0–7

#### Design Challenges / Opportunities |

Both the challenge and opportunity was to improve upon the existing poorly considered scheme. This was achieved by rationalising the floor plans to create improved circulation and reworking elevations to reflect local context.

### | Affordable Eco Development

#### Project Summary |

A research project was undertaken to create a case for a development of affordable dwellings on a rural exception site.

#### Architectural Services |

Initially an in-depth research project completed by Brink, this will shortly be progressing to include discussions with planners and stakeholders

#### Design Challenges / Opportunities |

The site presents an ideal opportunity to provide affordable homes for local people.

### | Private Residence, Cotswolds

#### Project Summary |

Significant contemporary extensions to provide expansive living space, a sizable residential annex, and enlarged garage space.

#### Architectural Services |

Brink are providing full architectural services for RIBA stages 0–7

#### Design Challenges / Opportunities |

Developing a scheme to satisfy the brief and creating contemporary proposals that contrast with the traditional stone dwelling whilst working with the restrictions of the site being on a flood plain.

Brink Architects is a thriving young practice with a selection of ongoing projects in various sectors

## 04 | chris rogers: director

**CertArch, DipArch, PGDipArch, MCIAT, ARB, RIBA**

Chris Rogers founded Brink Architects in 2018. He is an ARB registered architect, Chartered Member of the RIBA and a Chartered Architectural Technologist.

### Experience

Chris has over 20 years of experience in the construction industry, and prior to founding Brink was a Senior Associate at Rickett Architects, where he ran a wide range of high end residential, commercial, care and retail projects.

Through the professional management of external consultants and an in-house team of Technicians and Architects, Chris has experience delivering demanding construction projects to the highest standards.

In addition to running Brink Architects Chris is actively involved with bringing on

the next generation of architects through his lecturing at De Monfort University and Oxford Brookes.

Completing his own self build family home provided Chris with a unique insight into the journey from the client's perspective.

The experience of carrying out complex elements of construction from his own details provided a valuable insight between the interface of theory and practical application, and has enriched his understanding of detailed and general development. This knowledge is shared and applied to all Brink Architects projects.

As well as residential schemes, Chris has fully designed and lead multimillion pound hotels, care homes, student accommodation, commercial and retail projects throughout the UK.



### Images |

**01 & 05 | Forceleap Farm |** Historic agricultural buildings that are being converted to create a rural events centre

**02 | Field View |** Development of 62 new build dwellings in Brackley, Northamptonshire

**03 & 04 | Cotswolds Residence |** Contemporary extensions to existing historic dwelling

**06 | Combrook Manor |** Extension to listed manor house





## 05 | contact

If you would like to find out more about Brink Architects and what we do, please do get in touch using the contact details below.

### Get in touch

The Studio, Friday's Barn  
Crowfield, Brackley  
Northants, NN135TW

t: +44 (0)1280 850757  
e: [info@brinkarchitects.co.uk](mailto:info@brinkarchitects.co.uk)